

NOVA DOCK SEALS - FP SERIES

EQUIPMENT SPECIFICATIONS

NOVA FP Series Seals are built of durable materials and designed for use in high traffic areas. They provide a superior seal at a very competitive price.

- Cover material and wear pleats are top grade fabrics utilized for superior performance and weather resistance
- High density urethane foam provides long life and excellent resiliency characteristics
- Select grade treated wood framing
- Heavy duty galvanized mounting hardware
- Brass grommets with spur washers for venting
- Full height yellow guide stripe standard
- Velcro® brand fasteners



DESCRIPTION:

Base Fabric:

- Vinyl - 18 oz., 22 oz., 40 oz.
- Hypalon* - 16 oz., 40 oz.
- Max 60

Reinforcing Fabric (Multiple Layers):

- Vinyl - 18 oz., 22 oz., 40 oz.
- Hypalon* - 16 oz., 40 oz.
- Max 60

Wear Pleat Spacing:

- WP4 • WP8 • WP16

Wear Face:

- Side Pad • Head Pad

Scuff Guard:

- 4' • Full Height

Bottom Door Flaps:

- 1 to 3 Sides

Fabric Colors:

- Black is standard - call for other color options

**Call for availability*

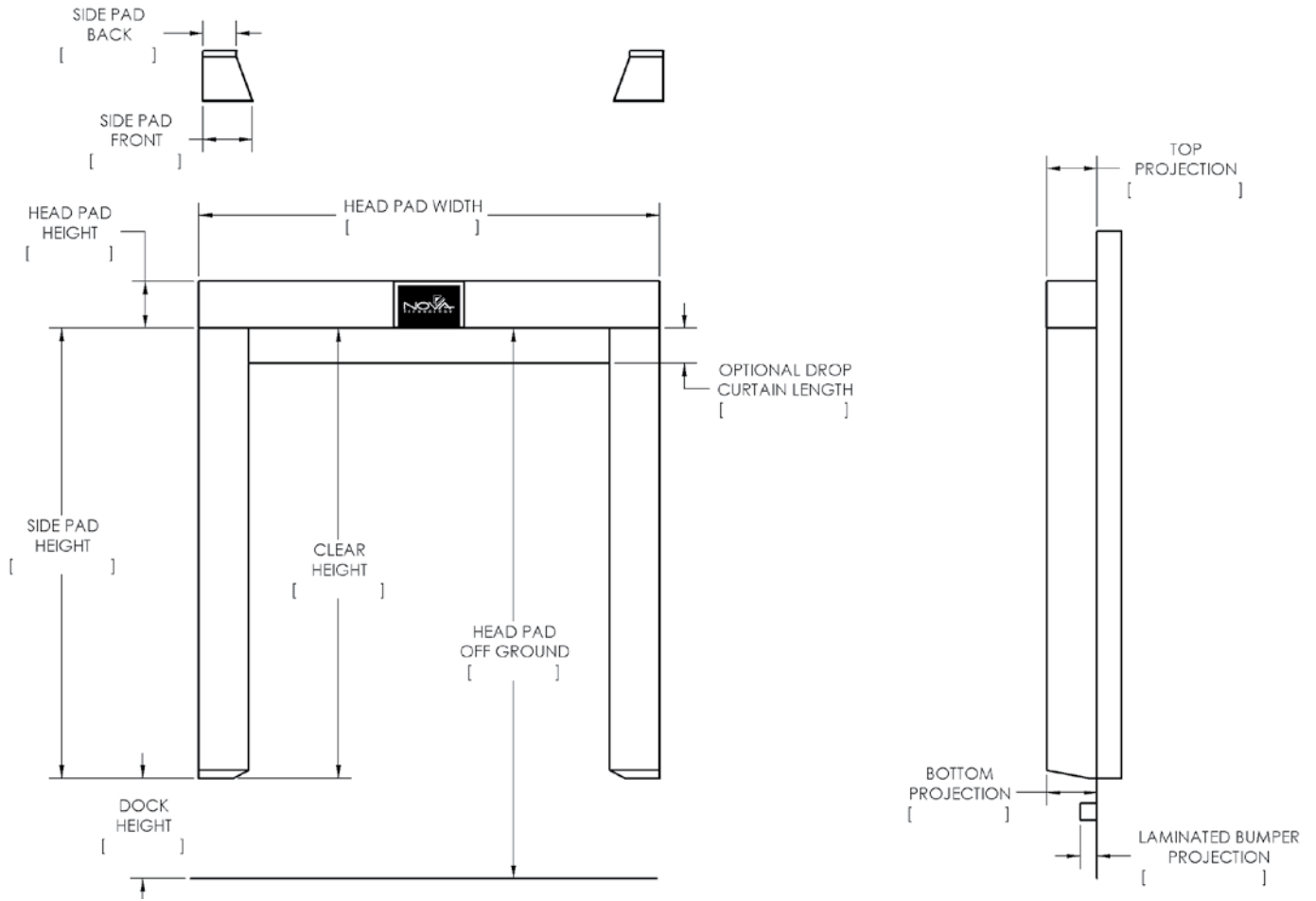
OPTIONS:

- Wear Pleats
- Wear Face
- Scuff Guards
- Bottom Door Flaps (1 to 3 sides)
- Drop Curtains
- Pull Rope System for Drop Curtains
- 2" Foam Filled Drop Curtains
- Flame Retardant Foam & Fabric
- Top Corner Pleats Only
- 24" high yellow guide stripe
- Block Outs
- Galvanized Metal Backs



DOCK SEALS - FP SERIES

SPECIFICATIONS



MODEL FP: _____ QUANTITY: _____	COMPANY: _____
DOOR WIDTH: _____	SALESPERSON: _____
DOOR HEIGHT: _____	JOB NAME: _____
DOCK HEIGHT: _____	
DOCK BUMPER/LEDGE COMBINED PROJECTION _____	
DRIVE APPROACH: <input type="checkbox"/> LEVEL <input type="checkbox"/> INCLINED <input type="checkbox"/> DECLINED	
SPECIAL INFORMATION: _____	

