

NOVA DOCK SEALS - FP SERIES

EQUIPMENT SPECIFICATIONS

NOVA FP Series Seals are built of durable materials and designed for use in high traffic areas. They provide a superior seal at a very competitive price.

- Cover material and wear pleats are top grade fabrics utilized for superior performance and weather resistance
- High density urethane foam provides long life and excellent resiliency characteristics
- Select grade treated wood framing
- Heavy duty galvanized mounting hardware
- Brass grommets with spur washers for venting
- Full height yellow guide stripe standard
- Velcro® brand fasteners



DESCRIPTION:

Base Fabric:

- Vinyl - 18 oz., 22 oz., 40 oz.
- Hypalon* - 16 oz., 40 oz.
- Max 60

Reinforcing Fabric (Multiple Layers):

- Vinyl - 18 oz., 22 oz., 40 oz.
- Hypalon* - 16 oz., 40 oz.
- Max 60

Wear Pleat Spacing:

- WP4 • WP8 • WP16

Wear Face:

- Side Pad • Head Pad

Scuff Guard:

- 4' • Full Height

Bottom Door Flaps:

- 1 to 3 Sides

Fabric Colors:

- Black is standard - call for other color options

**Call for availability*

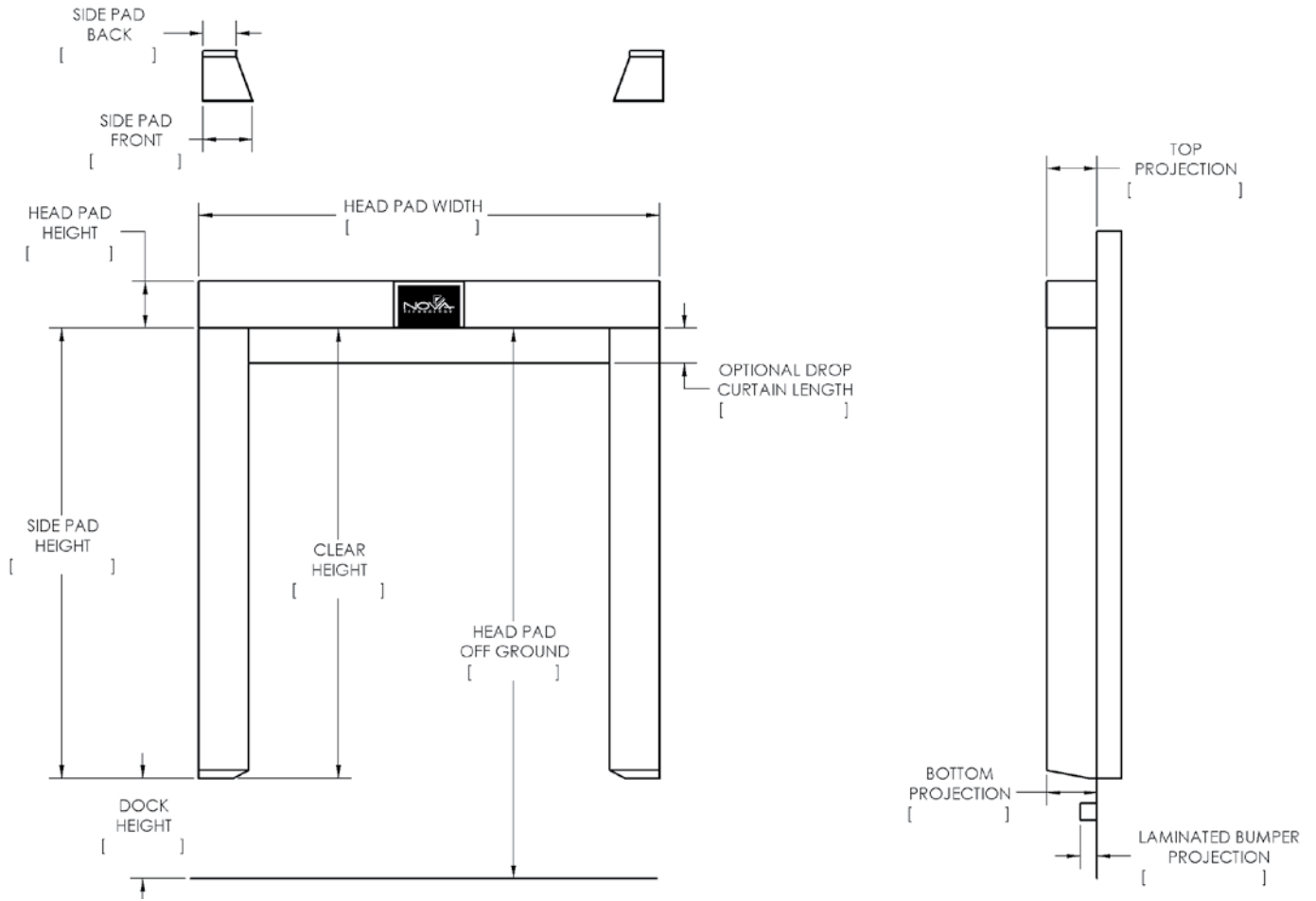
OPTIONS:

- Wear Pleats
- Wear Face
- Scuff Guards
- Bottom Door Flaps (1 to 3 sides)
- Drop Curtains
- Pull Rope System for Drop Curtains
- 2" Foam Filled Drop Curtains
- Flame Retardant Foam & Fabric
- Top Corner Pleats Only
- 24" high yellow guide stripe
- Block Outs
- Galvanized Metal Backs



DOCK SEALS - FP SERIES

SPECIFICATIONS



MODEL FP: _____	QUANTITY: _____	COMPANY: _____
DOOR WIDTH: _____		SALESPERSON: _____
DOOR HEIGHT: _____		
DOCK HEIGHT: _____		
DOCK BUMPER/LEDGE COMBINED PROJECTION _____		JOB NAME: _____
DRIVE APPROACH:		
<input type="checkbox"/> LEVEL <input type="checkbox"/> INCLINED <input type="checkbox"/> DECLINED		
SPECIAL INFORMATION: _____		



NOVA DOCK SHELTERS - RF SERIES

EQUIPMENT SPECIFICATIONS

NOVA RF Series Dock Shelters allow unrestricted access to trailers for loading and unloading while minimizing pressure on the building wall. The face curtains provide positive wrap-around protection with rugged construction designed for heavy traffic areas.

- Flexible fiberglass stays
- Treated lumber side and head frame
- Frames covered with translucent plastic
- Aluminum angle face edging
- Top grade fabrics utilized for superior performance and weather resistance
- Vinyl covered foam "drop in" style draft pads
- Steel support bumpers (black)
- Heavy duty galvanized mounting hardware
- 15" yellow guide stripe standard



DESCRIPTION:

Base Fabric:

- Vinyl - 18 oz., 22 oz., 40 oz.
- Hypalon* - 16 oz., 40 oz.
- Max 60

Taper:

- Yes • No

Head Frame:

- Rake • Flat

Frame Construction:

- Treated Lumber

Steel Support Bumpers:

- 21" • 27" • 33" • 39" • 45" • 51" • Other

Fabric Colors:

- Black is standard - call for other color options

**Call for availability*

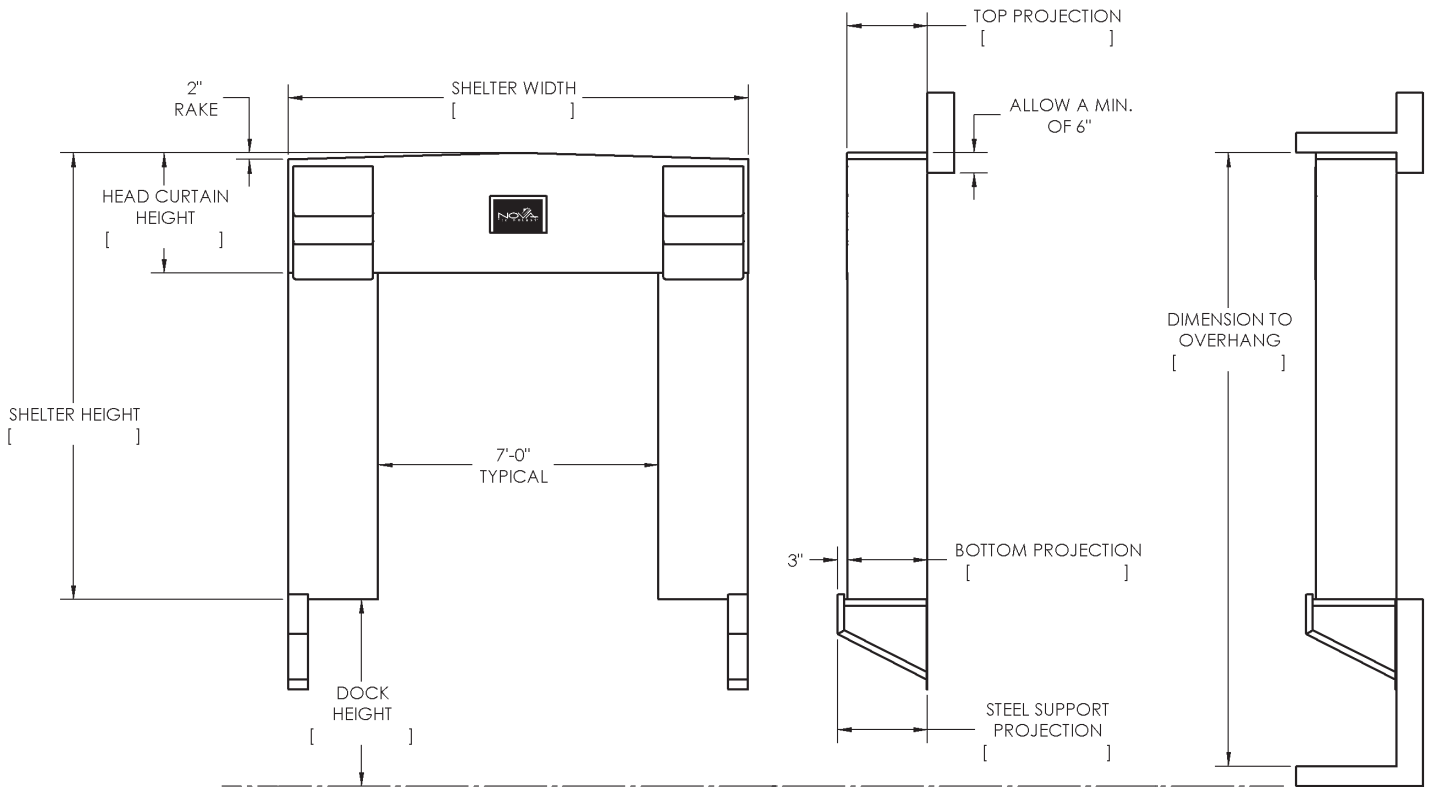
OPTIONS:

- Door Numbers
- Full Length Guide Stripes
- Shelter Projection Over 48"
- 2" Foam Front Head Curtain
- Pull Rope System
- Hook and Loop Splits on Head Curtain
- Head Curtain Drop Over 54"
- Frame Cut-Outs for Obstructions
- Non Projecting Frame
- Common Member Units
- Ground Level Units
- 18 oz. White Vinyl on Frames
- Galvanized Steel Channel Frame



DOCK SHELTERS - RF SERIES

SPECIFICATIONS



<p>MODEL RF: _____ QUANTITY: _____</p> <p>DOOR WIDTH: _____</p> <p>DOOR HEIGHT: _____</p> <p>DOCK HEIGHT: _____</p> <p>DOCK BUMPER/LEDGE COMBINED PROJECTION _____</p> <p>DRIVE APPROACH:</p> <p style="padding-left: 20px;"> <input type="checkbox"/> LEVEL <input type="checkbox"/> INCLINED <input type="checkbox"/> DECLINED </p>	<p>COMPANY: _____</p> <p>SALESPERSON: _____</p> <p>JOB NAME: _____</p>
<p>SPECIAL INFORMATION: _____</p> <p>_____</p>	

